

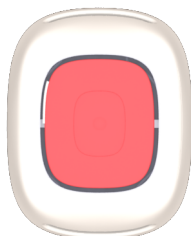


SMILE Mounting Instruction

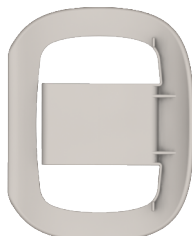




1



2



3



4

Item	Denomination
1	SMILE Easy Press Adapter
2	SMILE
3	SMILE Clip
4	SMILE Pin (necklace string not shown but mounted when delivered)
	SMILE Wristband (not in picture)

© Copyright 2014 Neat Electronics AB

Document number: NE41 14001-02 v1.0

Revision date: 2014-02-12

NEAT Electronics AB

Varuvägen 2

246 42 Löddeköpinge

Sweden

Phone: +46 46 70 70 65

Fax: +46 46 70 70 87

www.neatelectronics.se

We, NEAT Electronics AB, Varuvägen 2, 246 42 Löddeköpinge, SWEDEN, hereby declare under our sole responsibility, that this product, NEO Home Care Phone, is in conformity with the directives; 1999/5/EC, 73/23/CE, 89/336/CEE

and conforms to the following product specifications:

Safety: EN60950-1:2001;

EMC: EN 301 489-3 v1.4.1 Class 1;

Radio: EN 300 220-3 v1.1.1;

Environmental: EN 50134-2:2000, EN50134-3:2002

Ulrik Lundberg
Managing Director



1 SMILE Parts

1.1 SMILE Easy Press Adapter

1.2 The SMILE Easy Press Adapter is an accessory to help facilitate pressing the SMILE unit.

1.3 SMILE Unit

The SMILE unit can be worn with a wristband or be fitted with a clip and/or a necklace.

1.4 SMILE Clip

If the Clip is fitted, the Pin must be used to fasten it. When using the clip with the PIN, the SMILE can be worn with the necklace and the clip enables the user to fasten the unit onto their clothes, eg. during meals etc.

1.5 SMILE Pin

The necklace is fitted to the SMILE Pin when delivered.

2 SMILE mounting instructions

2.1 Fitting the Clip and Pin

The pictures below illustrates how to fit the clip and pin. If the clip is not used, then it can be omitted from the fitting.

Place the clip to the bottom of the SMILE and insert the pin. Press it downward in the wristband fitting holes and until you hear a “Click”. To release the Pin from the SMILE, press the latch and pull up the Pin.

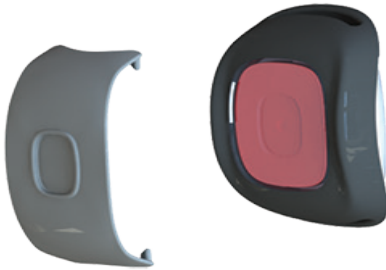


2.2 Fitting the SMILE Easy Press Adapter

The Easy Press Adapter is fitted by gently pressing into into place and assure the four hooks click into the wristband fitting holes. To remove, use the tip of a table knife, a finger nail or similar and gently release it from either side.



When using the Easy Press Adapter together with the Pin, insert and remove the Pin BEFORE fitting/removing the Easy Press Adapter or else the hooks on the Easy Press Adapter may break.



2.3 Fitting the wristband

Insert the wristband in the holes of the SMILE.