

RY-IP44

Input/Output Network Adaptor

Programming Manual

For use with IX Series, IS-IP Series, and IPW-1A



ATTENTION:

This is the programming manual for the RY-IP44 only. Refer to the Installation and Setting Manuals for the series being integrated with for complete installation/programming information on each system (IX, IS-IP, IPW-1A).

Package Contents

- RY-IP44
- Programming Manual
- Barix Quick Install Guide

Installation Requirements

- General understanding of IX Series, IS-IP Series, or IPW-1A programming
- 9-30V DC power supply (sold separately)
- Unique IP address for each adaptor

Overview / Description

The RY-IP44 is a Barix Barionet 50 with proprietary firmware installed for the device to function with the Aiphone IX Series, IS-IP Series stations, or IPW-1A systems.

Relay outputs can be programmed to trigger for door release, upon call-in, while in communication, or while calling and communicating.

Inputs can be programmed to trigger a call with the IX or IS-IP systems with an invalid card swipe, motion detector activation, or selective call from the IS-IP4DVF door station.

The RY-IP44 is required when running IX Mobile app on a mobile device. The RY-IP44 will function as the IX Series app server. Up to 8 mobile devices can be employed per server. The RY-IP44 will alert the mobile device if it goes out of wireless network range.

If only using the RY-IP44 for IX Mobile, configure the adaptor as shown on page 5 then skip to page 11 (IX Mobile Server). The SIF.ini file is not needed when only using the adaptor as the IX Server. Refer to pages 11-15 for steps on adding a mobile device to the IX Series using the IX Support Tool and for setting up the mobile device.

The RY-IP44 adaptor is not a PoE device. A dedicated 9-30V DC power supply is required. Use the Aiphone PS-1225UL power supply (sold separately).

SIF.ini File (IX Series and IS-IP Series Stations Only)

Important:

The intercom system must be fully programmed and operational prior to programming the RY-IP44 adaptor.

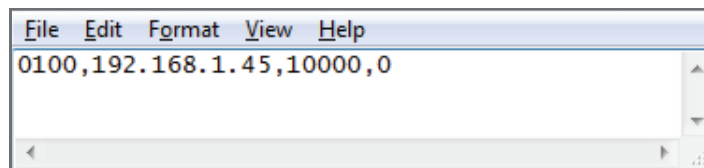
Create a SIF.ini file in order for the IX Series and IS-IP Series door stations and master stations to communicate with the adaptor. Use a text editor program (i.e. notepad) to create this file and save it with a .ini extension.

- Program Type:** Range is between 0100 and 1111 (Binary).
- RY-IP44 IP Address:** IP address assigned to the RY-IP44. Must be unique for each RY-IP44.
- Destination Port:** Port number assigned on the RY-IP44. The default port is 10000. This can be set in the range from 1 to 65535.
- SSL Y/N :** This device does not use SSL. Input 0 for no.

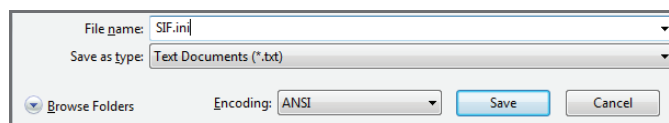
Example Text File:

0100,192.168.1.45,10000,0

Program Type RY-IP44 IP Address Destination Port SSL Y/N



Save the SIF file with a .ini extension (.ini must be typed manually) to a location on the PC being used for programming the IX Series or IS-IP Series stations. This file must be uploaded to each device associated with the RY-IP44 using the instructions that follow.



IX Series: Uploading SIF.ini File

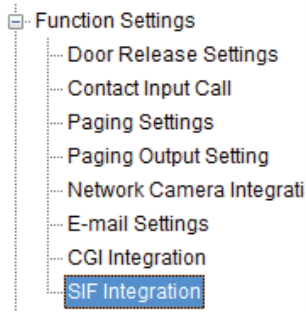
Upload the SIF.ini file to each IX Series station associated with the RY-IP44 adaptor.

⚠️ *The IX Support Tool or web browser interface can be used to upload the SIF.ini file to each station. Loading via the IX Support Tool is shown in these instructions.*

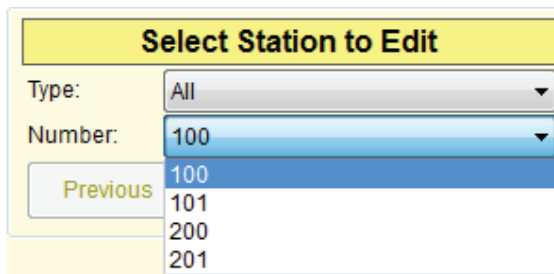
Important:

The intercom system must be fully programmed and operational prior to uploading the SIF.ini file.

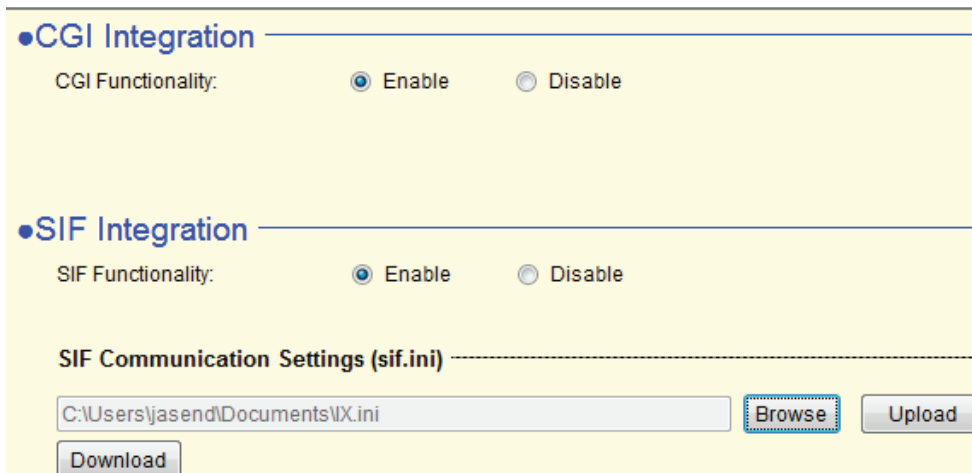
- A. Log in to the IX Series system using the IX Support Tool.
- B. Expand the **Function Settings** tree on the left and select **SIF Integration**.



- C. Choose the station to be edited from the **Number** drop down menu then click the **Select** button.



- D. Select the **Enable** radio button for both the CGI Integration and SIF Integration. Click **Browse** to browse to where the .ini file is saved and click **Upload** to send to station.



- E. Click **Update** to save the changes for the station then repeat the process for each station that will be associated with the RY-IP44.
- F. After completing steps C, D, and E for each station, upload the changes. Click **File, Upload Settings to Station**. Select the stations to upload to and click **Start Upload**.

IS-IP Series: Uploading SIF.ini File

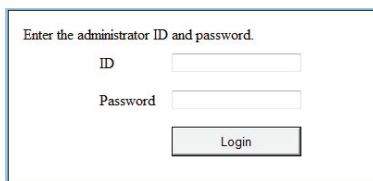
Upload the SIF.ini file to each IS-IP Series station associated with the RY-IP44 adaptor.

 Note that the IP address for each station will be unique for your network settings.

Important:

The intercom system must be fully programmed and operational prior to uploading the SIF.ini file.

- A. Open a web browser and type **https://[ip address]/sif** in the address bar.
[ip address] = static IP address assigned to the station being programmed.
- B. A security certificate error message will appear. Continue to the website.
- C. Enter the administrator ID and password.



Enter the administrator ID and password.

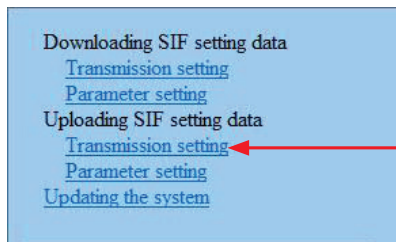
ID

Password

Login

Default ID: aiphone
Default Password: aiphone

- D. Select **Transmission setting** under **Uploading SIF setting data** from the menu on the left side of the screen.



- E. Click the **Upload** button. A new window will open.



- F. Click the **Browse** button and navigate to the .ini file saved on the PC.
- G. Click the **Upload** button. A message will appear stating the settings will not be applied until the system is updated.
- H. Click **Updating the system** from the menu on the left. Click the **Update** button and the unit will update and restart itself.
- I. Repeat this process for each door and master station associated with the RY-IP44 adaptor.

Configuring the RY-IP44 (assigning IP address and system use)

The RY-IP44 has a default IP address of 192.168.1.45. Open a web browser and point the address bar to <http://192.168.1.45> for access to the adaptor. The first screen to appear will be the **Device Status** screen.

Configuration button

Digital input status

Relay status and control. Click on each LED to verify relay function.

Click the **CONFIGURATION** button to open the **Device Configuration** screen. This is where a unique IP Address, Netmask, and Gateway can be assigned to the adaptor. Consult with your IT department for these settings.

Settings not utilized for Aiphone functionality. Do not adjust.

AIPHONE: Select the Aiphone system type the relay is to be used with.

SECURITY: For creating a password for access to the web browser interface.

The Aiphone system type that the relay is being integrated with will need to be selected. Click the **AIPHONE** tab. Use the drop down by **System Type** to select the appropriate system. Once selected, click OK. Click **Reboot** on the next screen to restart the adaptor.

System Type: Select IX, IS, or IPW-1A

SIF Socket Local Port: Enter the port number that was assigned in the SIF.ini file. Leave at "0" to use default 10000 port.

Username & Password: For IX/IS, enter system's username and password. Leave blank if using default (IX = admin, IS = aiphone).

IX Mobile App Server Port: Enter the port number that has been assigned in the IX Mobile app(s). Enter "0" if default port (5061) is to be used.

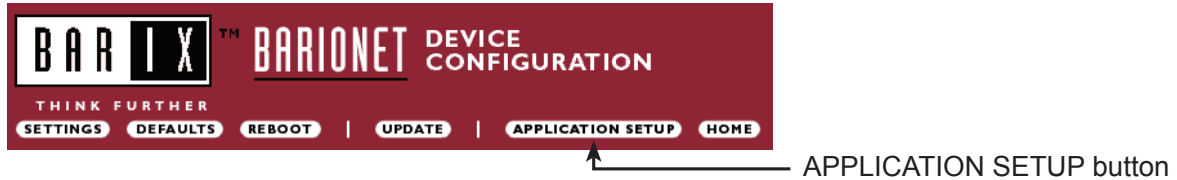
UDP Protocol Port: Used for IPW-1A only. Enter "0" if default port (1724) is to be used.

IX Series: Relay Output Programming

The RY-IP44 has 4 relays that can be programmed to trigger while calling, while in communication, or while calling and communicating with a specific station. The relays can also be programmed for door release.

Set the RY-IP44 for use with the IX Series (refer to page 5).

From the **DEVICE CONFIGURATION** screen, click **APPLICATION SETUP**.



Relay Action options:

- Door Release - Normally-Open
 - Door Release - Normally-Closed
 - Active while Calling from Source
 - Active while Communicating
 - Active during Calling and Communicating
- } Relay will trigger when the associated station's door release contact is triggered.
- } Relay will trigger when the associated station calls or communicates.

The IX Series allows for door release partitioning. When the RY-IP44 relay action is set for door release, the relay will be triggered only if door release is allowed on the station. To set door release partitioning, refer to **Door Release Settings** under the **Function Settings** tree in the IX Support Tool.

When the relay action is set for the “Door Release” options, the relay on the RY-IP44 will trigger when the associated station is calling or communicating and its door release contact is triggered.

When the relay action is set for any of the “Active While” options, the relay will trigger when the associated station calls or communicates at any priority level.

Relay Output Functionality

Relay Station Number	Relay Action
1	<input type="text" value="100"/> Door Release: Normally-Open
2	<input type="text" value="101"/> Door Release: Normally-Open
3	<input type="text" value="0"/> Door Release: Normally-Open
4	<input type="text" value="0"/> Door Release: Normally-Closed
	Active While Calling From Source
	Active While Communicating
	Active While Calling From Source And Communicating

Enter the **station number** of the station to be associated with the relay. Select the relay condition from the **Relay Action** drop down menu.

Click on **Apply Settings** then click **Reboot** to restart the adaptor with the saved changes.

When the entered station is active, the associated relay will trigger based on the Relay Action settings.

IX Series: Input Programming

The RY-IP44 adaptor has 4 inputs that can be programmed to trigger a call-in from a specific door station or master station to a specific master station or group of master stations.

The RY-IP44 inputs can have different calling rules than the default calling rule set during the IX Series programming.

Select the call-in priority level for each input using the **Priority** drop down menu.

Enter the target IP address of the station for remote call-in.

Click **Apply Settings** to save the changes. Do not reboot the adaptor at this time.

Click **APPLICATION SETUP** to return to the Application Configuration Screen.

Relay	Priority	Target IP	Setup
1	Normal ▼	0 . 0 . 0 . 0	Destinations
2	Normal	0 . 0 . 0 . 0	Destinations
3	Priority	0 . 0 . 0 . 0	Destinations
4	Urgent	0 . 0 . 0 . 0	Destinations
4	Normal ▼	0 . 0 . 0 . 0	Destinations

Click on **Destinations** next to the input being configured. Another window will open. Enter the station number of the master stations to be called when the input is triggered.

When the target IP address is a door station, a maximum of 20 master stations can be entered.

When the target IP address is a master station, a maximum of 20 master stations or 1 group can be entered. A group can consist of up to 50 master stations and must be created using the IX Support Tool.

Check the **Enable** box beside each station entered.

Click on **Apply Settings** then click **Reboot** to restart the adaptor with the changes.

Destinations for Remote Call-In		
Input 1		
#	Station Number	Enable
1	200	<input checked="" type="checkbox"/>
2	0	<input type="checkbox"/>
3	0	<input type="checkbox"/>

IS-IP Series: Relay Output Programming

The RY-IP44 has 4 relays that can be programmed to trigger when a specific door station is calling, while in communication, or while calling and communicating. The relays can also be programmed for door release from one or multiple IP master station(s).

Set the RY-IP44 for use with the IS-IP Series (refer to page 5).

From the **Device Configuration** screen, click **APPLICATION SETUP**.



Application Setup button

IS-IP Series: Relay Output Programming (cont.)

Linked Stations Table:

Enter the IP address and TermID for each IS-IP station in the IS configuration. This table is used as a reference for each TermID in the system. After inputting each IP address and TermID, click **Apply Settings** at the bottom of the page to save the settings to memory. Return to the Application Screen or reboot adaptor by clicking the **Reboot** button. Rebooting must occur to update adaptor settings.

Definition: TermID

A TermID identifies the location of an IS-IP station in the IS Series configuration. It also distinguishes between master stations and door stations. A master station TermID will be xx-001 and a door station TermID will be xx-101. "xx" represents the line in which the station resides under "IP Unit Registration" in the IS Host programming.

Example:

01-101: Door station in address location 1.

03-001: Master station in address location 3.

Imported IP units list

	Station type	MAC address
1	IP video door station	00:0B:AA:0C:08:0D
2	IP master station	00:0B:AA:0B:01:20
3	IP master station	00:0B:AA:0B:01:30

Linked Stations

N.	IP ADDRESS	Term ID	N.	IP ADDRESS	Term ID
1	0 . 0 . 0 . 0	00 - 000	17	0 . 0 . 0 . 0	00 - 000
2	0 . 0 . 0 . 0	00 - 000	18	0 . 0 . 0 . 0	00 - 000
3	0 . 0 . 0 . 0	00 - 000	19	0 . 0 . 0 . 0	00 - 000
4	0 . 0 . 0 . 0	00 - 000	20	0 . 0 . 0 . 0	00 - 000
5	0 . 0 . 0 . 0	00 - 000	21	0 . 0 . 0 . 0	00 - 000
6	0 . 0 . 0 . 0	00 - 000	22	0 . 0 . 0 . 0	00 - 000
7	0 . 0 . 0 . 0	00 - 000	23	0 . 0 . 0 . 0	00 - 000
8	0 . 0 . 0 . 0	00 - 000	24	0 . 0 . 0 . 0	00 - 000
9	0 . 0 . 0 . 0	00 - 000	25	0 . 0 . 0 . 0	00 - 000
10	0 . 0 . 0 . 0	00 - 000	26	0 . 0 . 0 . 0	00 - 000
11	0 . 0 . 0 . 0	00 - 000	27	0 . 0 . 0 . 0	00 - 000
12	0 . 0 . 0 . 0	00 - 000	28	0 . 0 . 0 . 0	00 - 000
13	0 . 0 . 0 . 0	00 - 000	29	0 . 0 . 0 . 0	00 - 000
14	0 . 0 . 0 . 0	00 - 000	30	0 . 0 . 0 . 0	00 - 000
15	0 . 0 . 0 . 0	00 - 000	31	0 . 0 . 0 . 0	00 - 000
16	0 . 0 . 0 . 0	00 - 000	32	0 . 0 . 0 . 0	00 - 000

Relay Functionality:

Enter the TermID for the door station to be associated to the relay.

Select the relay action from the drop down menu.

Relay Action options:

- Door Release - Normally-Open
 - Door Release - Normally-Closed
 - Active while Calling from source
 - Active while in Communication with source
 - Active during Calling and Communication
- } Relay will trigger when a configured master station pushes the door release button for the associated door.
- } Relay will trigger when the associated door station calls or communicates.

When the relay action is set for the “Door Release” options, the relay will trigger when the associated door station is in communication, but only when a “configured” master station pushes the door release button.
 When the relay action is set for any of the “Active While” options, the relay will trigger when the associated door station calls or communicates at any priority level.

After the Door TermID and Relay Action has been set, click **Apply Settings** at the bottom of the screen to save the settings to memory. Return to the Application Screen or reboot adaptor by clicking on the **Reboot** button. Rebooting must occur to update adaptor settings.

Relay Output Functionality

Relay	Door	TermID	Relay Action	
1	01	101	Door Release: Normally-Open	Configure
2	02	101	Door Release: Normally-Open	Configure
3	02	101	Door Release: Normally-Closed	
			Active While Calling From Source	
			Active While Communicating	
4	01	101	Active While Calling From Source And Communicating	

To program a master station to control door release, click on the **Configure** button. A new window will open and the table shown below will be populated based on the entries made in the Linked Stations Table (see page 8). Check the **Flag** box beside each master station that will be “allowed” to trigger this relay for door release. Once all master stations have been checked, click **Apply Settings** at the bottom of this window to save the settings to memory. Reboot to update adaptor settings.

Note: The IS-SOFT software masters stations can NOT be enabled for door release using the RY-IP44.

#	IP Address	TermID	Flag
1	192.168.1.41	05-001	<input checked="" type="checkbox"/>
2	Not Configured		<input type="checkbox"/>
3	Not Configured		<input type="checkbox"/>

IS-IP Series: Input Programming

The RY-IP44 adaptor has 4 inputs that can be programmed to trigger a call-in from a specific door station to a specific master station or group of master stations (max. 20). The RY-IP44 inputs can have different calling rules than the default calling rule set under Advanced Station Settings in the IS Host Programming.

Choose the Call-In priority level for each input using the **Priority** drop down menu. Enter the target IP address of the door station for remote call-in.

Click **Apply Settings** to save the changes. Do not reboot the adaptor at this time.
 Click **APPLICATION SETUP** to return to the Application Configuration screen.

Relay	Priority	Target Door IP				Setup
1	Normal	192	168	1	40	Destinations
2	Normal	0	0	0	0	Destinations
3	Priority	0	0	0	0	Destinations
4	Urgent	0	0	0	0	Destinations
	Normal	0	0	0	0	Destinations

IS-IP Series: Input Programming (cont.)

Click on **Destinations** next to the input being configured. A new window will open. Enter the TermID for each master station to be called (see page 8 for TermID information). A maximum of 20 master station TermID's can be entered. Check the **Enable** box beside each TermID entered to allow the master to be called. Once all master station TermID's have been entered and enabled, click **Apply Settings** at the bottom of this window to save the settings to memory. Reboot to update adaptor settings.

Destinations for remote call-in, input 1			
Station N.	Term-ID		Enable
1	05	- 001	<input checked="" type="checkbox"/>
2	00	- 000	<input type="checkbox"/>
3	00	- 000	<input type="checkbox"/>
4	00	- 000	<input type="checkbox"/>

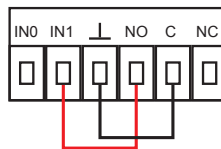
IPW-1A: Relay Output Programming

The RY-IP44 has 4 relays that can be programmed to trigger while calling, while in communication, or while calling and communicating with a specific door station. The relays can also be programmed for door release. Set the RY-IP44 for use with the IPW-1A (refer to page 5).

Relay Action options:

- Door Release - Normally-Open
 - Door Release - Normally-Closed
 - Active while Calling from source
 - Active while in Communication with source
 - Active during Calling and Communication
 - Active While Any Station Calling
- } *Relay will trigger when the PC master station pushes the door release button.
- } Relay will trigger when the associated door station calls or communicates.
- } Relay triggers when any station calls. No assignment required.

* When using the RY-IP44 for door release, the relay on the IPW-1A must be set to door release and the relay must be jumpered to the sensor input as shown below.



From the **Device Configuration** screen, click **APPLICATION SETUP**.



Application Setup button

Enter the Station ID for the IPW-1A to be associated with each relay on the RY-IP44. Select the relay condition from the **Relay Action** drop down menu. When done, click on **Apply Settings**. Click **Reboot** on the next screen to restart the adaptor with the applied settings.

Relay Output Functionality

Relay	Station ID	Relay Action
1	<input type="text" value="1"/>	Door Release: Normally-Open
2	<input type="text" value="0"/>	Door Release: Normally-Open
3	<input type="text" value="0"/>	Door Release: Normally-Closed
4	<input type="text" value="0"/>	Active While Calling From Source
		Active While Communicating
		Active While Calling From Source And Communicating
		Active While Any Station Calling

IX Mobile Server

The RY-IP44 adaptor is used as a server for up to 8 mobile devices when using IX Mobile. Set the RY-IP44 for use with the IX Series (refer to page 5).

Enter the IP address for each of the mobile devices in the **IX Mobile Server Functionality** table.

IX Mobile Server Functionality

Device	IP Address
1	<input type="text" value="0"/> . <input type="text" value="0"/> . <input type="text" value="0"/> . <input type="text" value="0"/>
2	<input type="text" value="0"/> . <input type="text" value="0"/> . <input type="text" value="0"/> . <input type="text" value="0"/>
3	<input type="text" value="0"/> . <input type="text" value="0"/> . <input type="text" value="0"/> . <input type="text" value="0"/>
4	<input type="text" value="0"/> . <input type="text" value="0"/> . <input type="text" value="0"/> . <input type="text" value="0"/>
5	<input type="text" value="0"/> . <input type="text" value="0"/> . <input type="text" value="0"/> . <input type="text" value="0"/>
6	<input type="text" value="0"/> . <input type="text" value="0"/> . <input type="text" value="0"/> . <input type="text" value="0"/>
7	<input type="text" value="0"/> . <input type="text" value="0"/> . <input type="text" value="0"/> . <input type="text" value="0"/>
8	<input type="text" value="0"/> . <input type="text" value="0"/> . <input type="text" value="0"/> . <input type="text" value="0"/>

Click on **Apply Settings** then click **Reboot** to restart the adaptor with the changes.

Refer to pages 12-15 for steps on adding a mobile device to the IX system using the IX Support Tool and for setting up the mobile device.

IX-Mobile

The IX Mobile app turns an iPhone®, iPad®, or iPod touch® running Apple® iOS versions 8.0 or higher or mobile devices running Android™ 4.1 or higher into an IX Series sub master station. Follow the steps below to configure the IX Series system and to prepare the mobile device(s) for connection via WiFi or over a cellular network with a VPN connection. Please note the mobile device running the IX Mobile app and the IX Series system must be connected to the same network.

Important:

- An IX-MV master station and an RY-IP44 adaptor are required in the system for the IX Mobile App to work -
- The IX Series hardware devices must be programmed and operational prior to adding the IX Mobile device -

Adding a Mobile Device to the IX Support Tool

- Open the IX Support Tool and log in to the system being programmed.
Expand the **1 Station Information** tree and click on **2 Identification**.
On the next available line, **3** assign a **Number***, **Name***, and select **Master Station** as the **Type** for the mobile app.
Repeat steps 1-3 for each instance of IX Mobile app that needs to be added to the system.

Station Information					
Identification					
#	Number	Name	Name (furigana)	Location	Type
	001	100	Video		Video Door Station
	002	101	Audio		Audio Only Door Station
	003	200	Master 1		Master Station
	004	201	Master 2		Master Station
	005	202	Mobile Device		Master Station

Note Station Information here to refer to later

Number	Name	IP Address

* For Programmers/Installers:
We recommend writing the station Number, Name, and IP Address into this table for reference when setting up the IX Mobile app.

Click the **Update** button to save changes.

- Expand the **4 Network Settings** tree and click on **5 IP Address**.
The IP Address of the added device(s) will be blank. Enter an **6 IP Address*** and **Subnet Mask** within the same range as the other devices in the system.

Station Information						Network Settings							
Identification						IP Address							
#	Number	Name	Location	Type	IPv4 Address	Subnet Mask							
	001	100	Video	Video Door Station	192.168.1.111	255	255	255	0				
	002	101	Audio	Audio Only Door Station	192.168.1.112	255	255	255	0				
	003	200	Master 1	Master Station	192.168.1.113	255	255	255	0				
	004	201	Master 2	Master Station	192.168.1.114	255	255	255	0				
	005	202	Mobile Device	Master Station	192.168.1.116	255	255	255	0				

Click the **Update** button to save changes.

- Expand the **7 Function Settings** tree and click on **8 Door Release Settings**.
Click the **9 Individual Master Station Door Release Settings** button.

Function Settings						
Door Release Settings						
#	Number	Name	Type	Door Release Tone	Door Release Autho	Door Release Output Settings (same as Contact / Audio Output Settings)
				Door Release Operatin	Authentication Key	Output Time [msec / sec] Range
001	100	Video	Video Door Station	Operation sound	****	200-2000 msec 400 Door Release
002	101	Audio	Audio Only Door Station	Operation sound	****	200-2000 msec 400 Door Release
003	200	Master 1	Master Station		****	200-2000 msec 400 Door Release
004	201	Master 2	Master Station		****	200-2000 msec 400 Door Release
005	202	Mobile Device	Master Station			200-2000 msec 400

- 10** Select the newly added mobile master from the drop down. Click **11 Select**. To enable door release for all stations for this selected master station, click the **12 Apply** button.

Select Station to Edit

Number: 202

Previous: 200, 201, 202

Master Station Door Release Settings

Master Station Setting

Number	Name	Location
200	Master 1	

Enable Door Release for all Stations:

Apply

Select Station to Edit

Number: 202

Previous Select Next

Master Station Door Release Settings

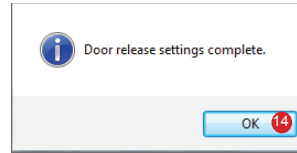
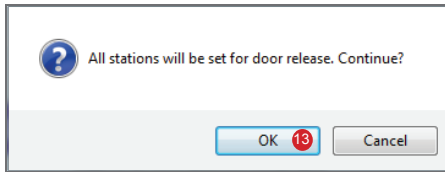
Master Station Setting

Number	Name	Location
202	Mobile Device	

Enable Door Release for all Stations:

Apply

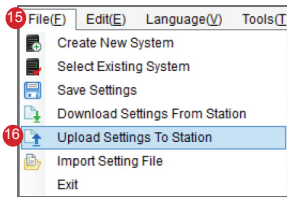
- A pop-up will appear saying “All stations will be set for door release. Continue?” Click **13 OK**. Another pop-up will appear saying “Door release settings complete.” Click **14 OK**.



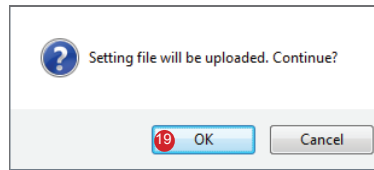
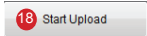
Repeat the process for each mobile master station added to the system.

Click the **Update** button to save changes.

- Click **15 File**, then **16 Upload Settings To Station**.
- 17** Select the hardware stations from the list and click **18 Start Upload**. Click **19 OK** on the pop-up to upload the settings.



Select	Number	Name	Location	Type	Status
<input checked="" type="checkbox"/>	101	Video		Video Door Station	-
<input checked="" type="checkbox"/>	102	Audio		Audio Only Door Station	-
<input checked="" type="checkbox"/>	201	Master 1		Master Station	-
<input checked="" type="checkbox"/>	202	Master 2		Master Station	-
<input type="checkbox"/>	203	Mobile Device		Master Station	-

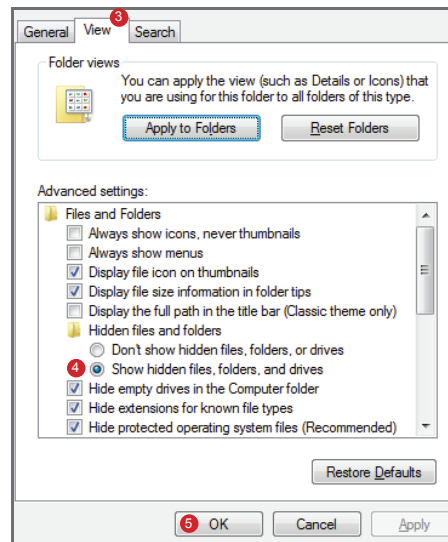
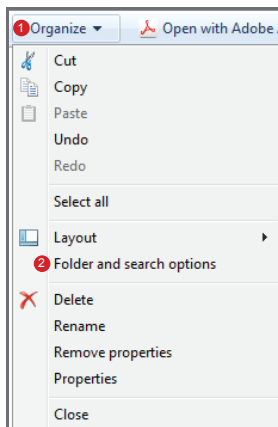


Verify success or failure of upload to each device in the Status column.

Configuration File

The IX Support Tool creates a configuration file for each device in the system and saves it to a folder within the Support Tool program folder. Once all programming changes have been made and uploaded, the configuration file will need to be copied to the mobile device.

- The folder containing the configuration file may be hidden. To show hidden folders, open Windows Explorer and click **1 Organize**. Click **2 Folder and search options**. Select the **3 View** tab and select the radio button beside **4 Show hidden files, folders, and drives** then click **5 OK**.



- Navigate to “C:\Program Files(x86)\Support Tool\System Data\(\name of system)\Setting” and select the configuration file that is associated with the mobile device. It will be identified by the Station Number that was assigned to it in the IX Support Tool. Copy the configuration file to a location on the programming PC that can easily be transferred to the mobile device.

Note: If using a 32-bit operating system, navigate to C:\Program Files\Support Tool\System Data\(\name of system)\Setting

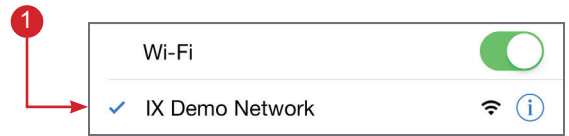
App Installation and Setup for Apple

Download IX Mobile from the [App Store](#)SM

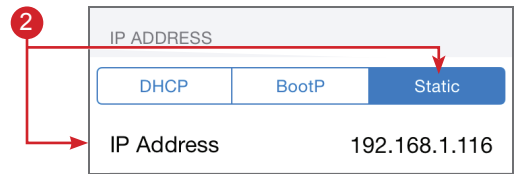


App Store is a service mark of Apple Inc.

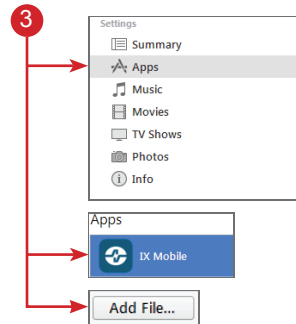
1 Connect to the WiFi network associated with the IX Series system installation. Once connected, tap on the connected network.



2 Tap **Static** and enter the *IP Address* that was assigned when configuring the app with the IX Support Tool.



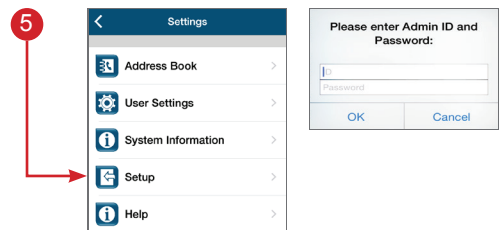
3 Connect the mobile device to the PC that has iTunes installed. Open iTunes and click **Apps**. Scroll down to File Sharing and select **IX Mobile**. Click **Add File** and navigate to where the configuration file is saved. Select the file and click **Open**.



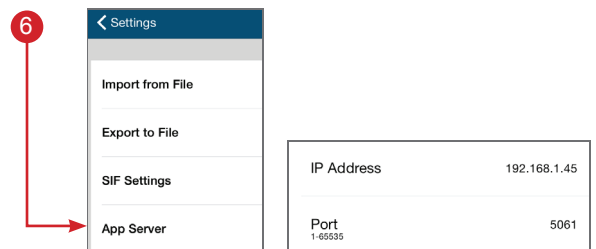
4 Launch the application on the mobile device. Tap the Menu icon.



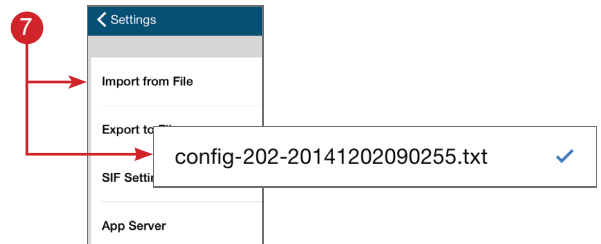
5 Tap **Setup**. Enter the Admin ID and Password and tap **OK**.
Default ID: admin
Default Password: admin



6 Tap **App Server**. Enter the IP Address and Port Number for the App Server (RY-IP44). Refer to page 11 for information on setting up the App Server.



7 Tap **Import from File**. Select the configuration file that was transferred to this device in Step 3. Tap **OK**.



8 A pop-up will appear stating “**New configuration applied.**”




9 To unlock the app, call the mobile device from a master station in the system.

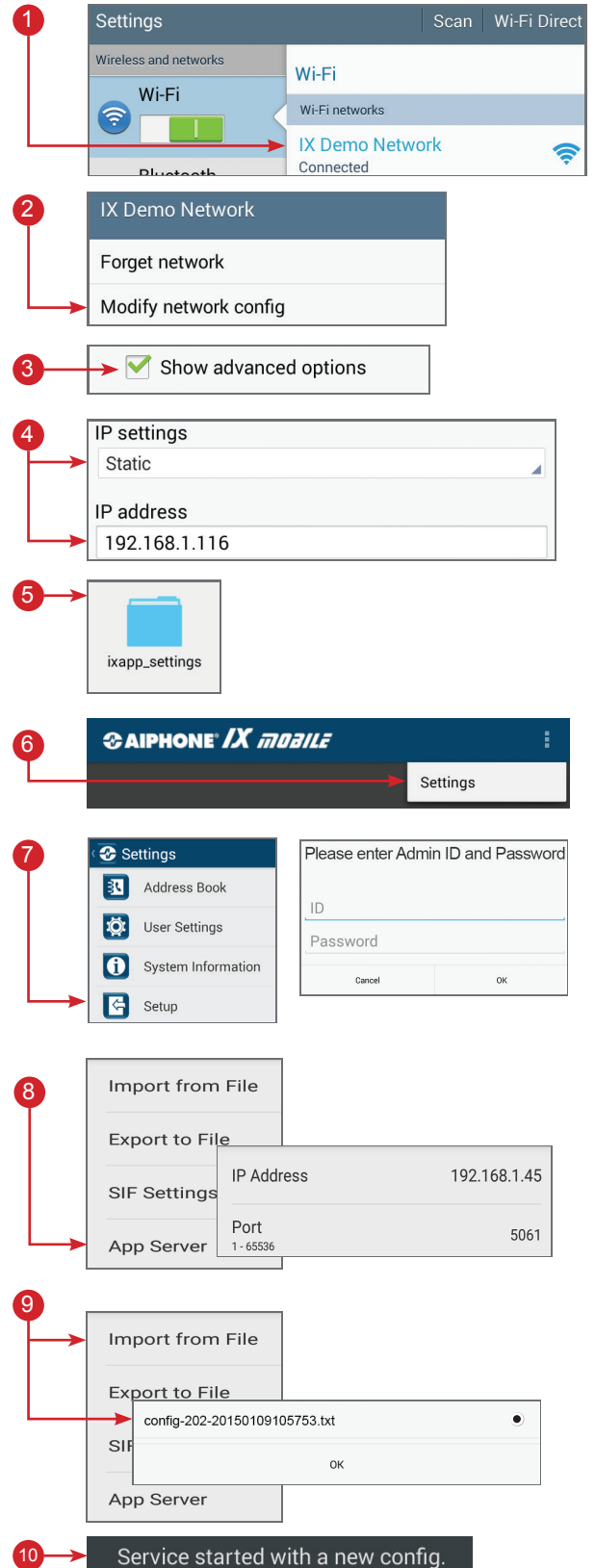
Apple, the Apple logo, iPhone, iPad, iPod touch, and iTunes are trademarks of Apple Inc., registered in the U.S. and other countries. The App Store is a service mark of Apple Inc.

App Installation and Setup for Android

Download IX Mobile using [Google Play™](#)

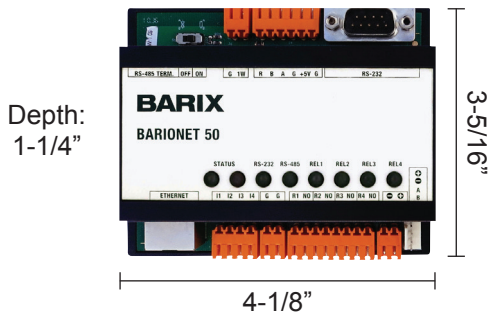


- 1 Connect to the WiFi network associated with the IX Series system installation. Once connected, tap and hold on the connected network.
- 2 A pop-up will appear. Tap **Modify network config**.
- 3 Check the box beside **Show advanced options**.
- 4 Under **IP settings**, select **Static** and enter the *IP Address* that was assigned when configuring the app with the IX Support Tool. Once entered, tap **Save**.
- 5 Connect the mobile device to the PC used for programming the system. Using the PC, navigate to the mobile device and locate the **ixapp_settings** folder. Paste/transfer the configuration file saved from the IX Support Tool to this folder.
- 6 Launch the application on the mobile device. Tap the  Menu icon, then tap **Settings**.
- 7 Tap **Setup**.
Enter the Admin ID and Password and tap **OK**.
Default ID: admin
Default Password: admin
- 8 Tap **App Server**. Enter the IP Address and Port Number for the App Server (RY-IP44). Refer to page 11 for information on setting up the App Server.
- 9 Tap **Import from File**.
Select the configuration file that was transferred to this device in Step 5. Tap **OK**.
- 10 A pop-up will appear stating **“Service started with a new config.”**
- 11 To unlock the app, call the mobile device from a master station in the system.



Android, Google Play, and the Google Play logo are trademarks of Google Inc.

RY-IP44 Dimensions



Mounting:

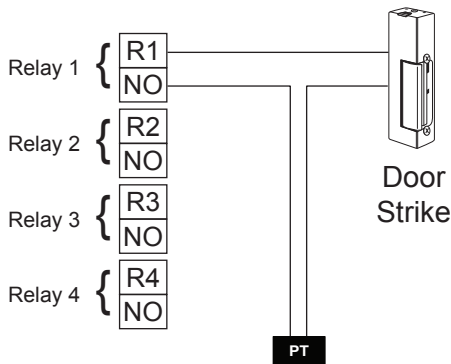
The RY-IP44 adaptor mounts to an Aiphone W-DIN11 mounting rail (sold separately).

RY-IP44 Wiring

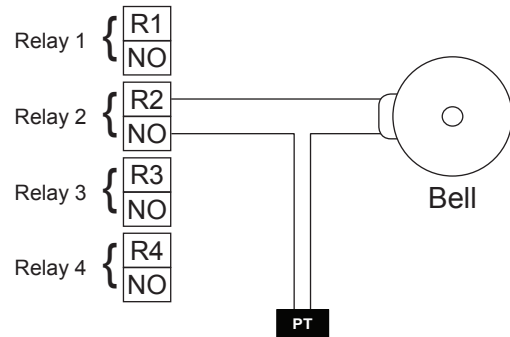
PT = Power Transformer (use proper power for the strike, mag lock, or external signaling device being used).

Relay contact rating: 30V DC, 0.5A.

Door release:

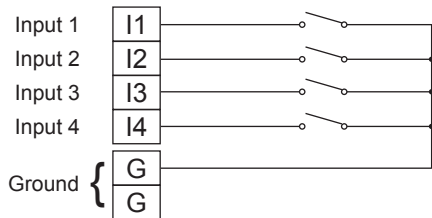


External signaling:



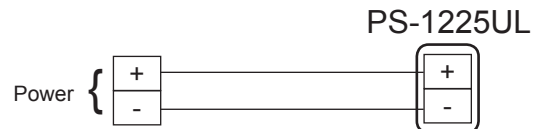
Inputs:

Connect a normally open (N/O) contact across any input and ground.



Power:

Use a 9-30V DC (300mA @ 12VDC) power supply to power the RY-IP44 adaptor. Use the Aiphone PS-1225UL power supply (sold separately).



FCC WARNING:

This device complies with Part 15 of the FCC rules.

Operation is subject to the following two conditions:

- (1) This device may not cause harmful interference.
- (2) This device must accept any interference that may cause undesired operation.
 - For proper regulatory compliance, the drain wire should be disconnected at the power supply end of the cable.
 - Changes or modifications not expressly approved by the party responsible for compliance could void the user's authority to operate the equipment.